

MONTHLY MEMBERSHIP PROGRESS REPORT

District 201T1

Results as of: 1/31/2020

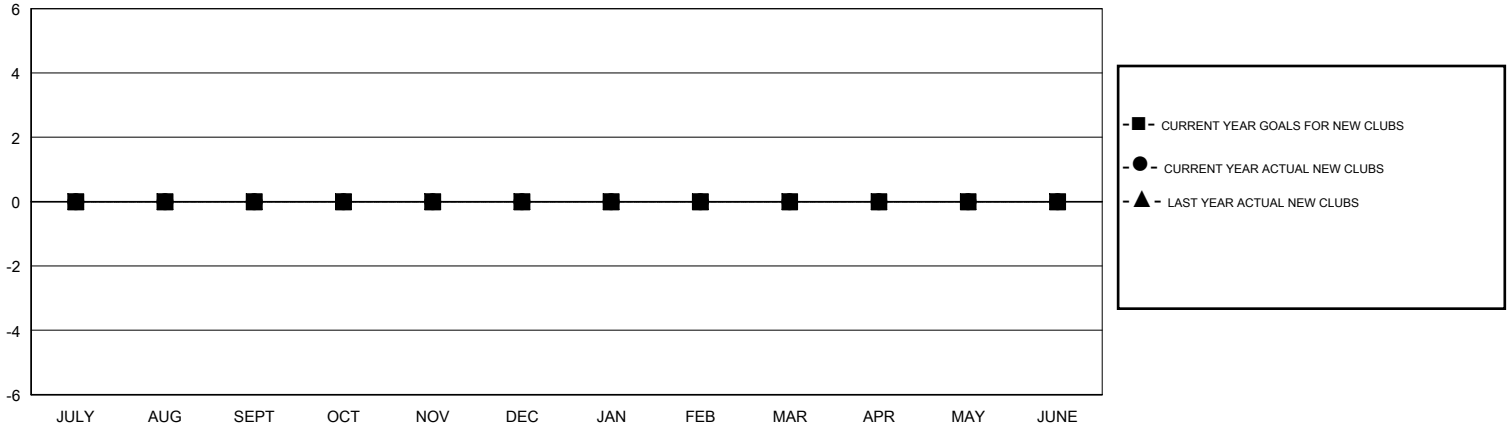
GMT:

LOCATION AUSTRALIA

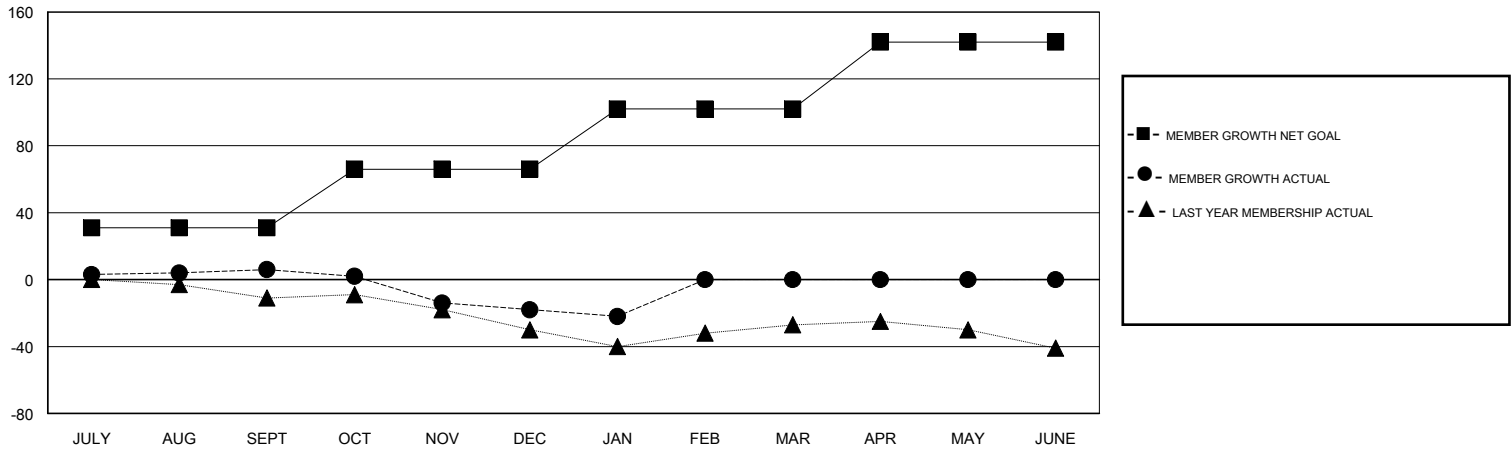
GMT CA

| Clubs | | | | Members | | | |
|-----------------------|---------------|-----------|---------------|-----------------------|------------------------|----------------------|--|
| RESULTS FOR 2019-2020 | | | | RESULTS FOR 2019-2020 | | | |
| QUARTER | NEW CLUB GOAL | NEW CLUBS | DROPPED CLUBS | QUARTER | MEMBER GROWTH NET GOAL | MEMBER GROWTH ACTUAL | DROPPED MEMBERS ACTUAL (including transfers) |
| JULY/AUG/SEPT | 0 | 0 | 0 | JULY/AUG/SEPT | 31 | 30 | 23 |
| OCT/NOV/DEC | 0 | 0 | 0 | OCT/NOV/DEC | 35 | 17 | 39 |
| JAN/FEB/MAR | 0 | 0 | 1 | JAN/FEB/MAR | 36 | 3 | 7 |
| APR/MAY/JUNE | 0 | 0 | 0 | APR/MAY/JUNE | 40 | 0 | 0 |

GOALS AND ACTUAL NEW CLUBS CUMULATIVE



GOALS AND ACTUAL MEMBERS CUMULATIVE



| | | |
|--|---|--|
| DROPPED CLUBS: 1 | 22 CLUBS OF 49 ADDED 1 OR MORE NEW MEMBERS | GENDER DISTRIBUTION MALE 745 (66.46%) FEMALE 376 (33.54%) |
| DROPPED MEMBERS DECEASED 9 CLUB CANCELLED 0 OTHER 60 <hr/> TOTAL 69 | CLICK HERE FOR CUMULATIVE MEMBERSHIP DATA | TOTAL FAMILY UNIT MEMBERS 236 FAMILY MEMBERS PAYING HALF DUES 119 |